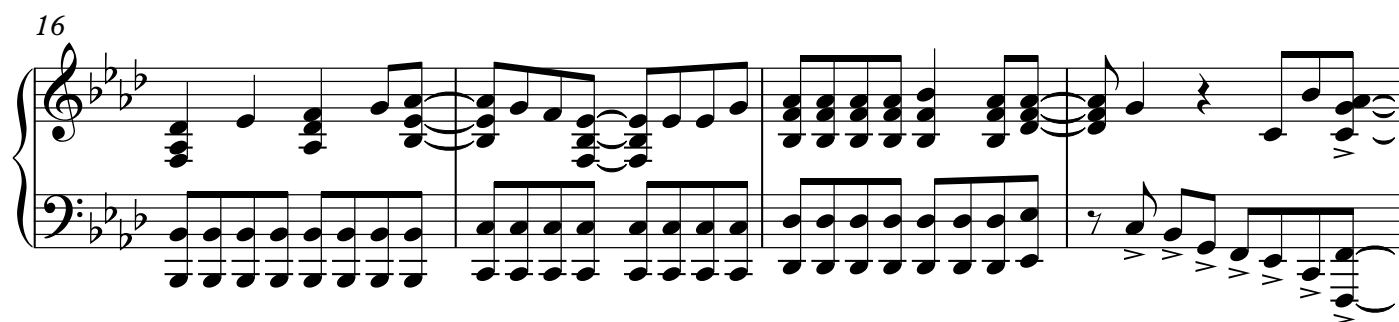


Rising Hope
Makouka Koukou no Rettousei
(魔法科高校の劣等生)

Arranged by Hihumiro
Transcribed by GovzLegacy

♩ = 190



20

System 1 (Measures 20-23): The music is in a key with four flats (B-flat, E-flat, A-flat, D-flat) and a common time signature. The right hand features a melodic line with eighth and quarter notes, while the left hand provides a rhythmic accompaniment with eighth notes and rests.

24

System 2 (Measures 24-27): The right hand continues the melodic line with eighth notes and quarter notes. The left hand features a rhythmic pattern of eighth notes and rests, with some chords.

28

System 3 (Measures 28-31): The right hand has a more complex melodic line with eighth notes and quarter notes. The left hand features a rhythmic pattern of eighth notes and rests, with some chords.

32

System 4 (Measures 32-35): The right hand features a melodic line with eighth notes and quarter notes. The left hand has a rhythmic pattern of eighth notes and rests, with some chords.

36

System 5 (Measures 36-39): The right hand features a melodic line with eighth notes and quarter notes. The left hand has a rhythmic pattern of eighth notes and rests, with some chords.

40

System 6 (Measures 40-43): The right hand features a melodic line with eighth notes and quarter notes. The left hand has a rhythmic pattern of eighth notes and rests, with some chords.

44

Measures 44-47 of a musical score in G major (one sharp). The right hand features a melodic line with eighth and sixteenth notes, while the left hand provides a harmonic accompaniment with chords and moving lines. Measure 44 starts with a whole rest in the right hand and a half note in the left hand. Measures 45-47 continue the melodic and harmonic development.

48

Measures 48-51 of the musical score. The right hand continues its melodic pattern with eighth notes, and the left hand maintains the accompaniment. Measure 48 begins with a whole rest in the right hand. The system concludes with measure 51.

52

Measures 52-55 of the musical score. The right hand introduces a new melodic motif in measure 52. The left hand continues with a steady accompaniment. Measure 52 starts with a whole rest in the right hand. The system ends with measure 55.

56

Measures 56-59 of the musical score. The right hand continues the melodic line, and the left hand provides the accompaniment. Measure 56 begins with a whole rest in the right hand. The system concludes with measure 59.

60

Measures 60-63 of the musical score. The right hand continues the melodic line, and the left hand provides the accompaniment. Measure 60 begins with a whole rest in the right hand. The system concludes with measure 63.

64

Measures 64-67 of a musical score in G major (one sharp). The score is written for piano. The right hand features a series of chords and a melodic line, while the left hand plays a steady eighth-note accompaniment. Measure 67 ends with a double bar line.

68

Measures 68-71 of a musical score in G major (one sharp). The score is written for piano. The right hand features a series of chords and a melodic line, while the left hand plays a steady eighth-note accompaniment. Measure 71 ends with a double bar line.